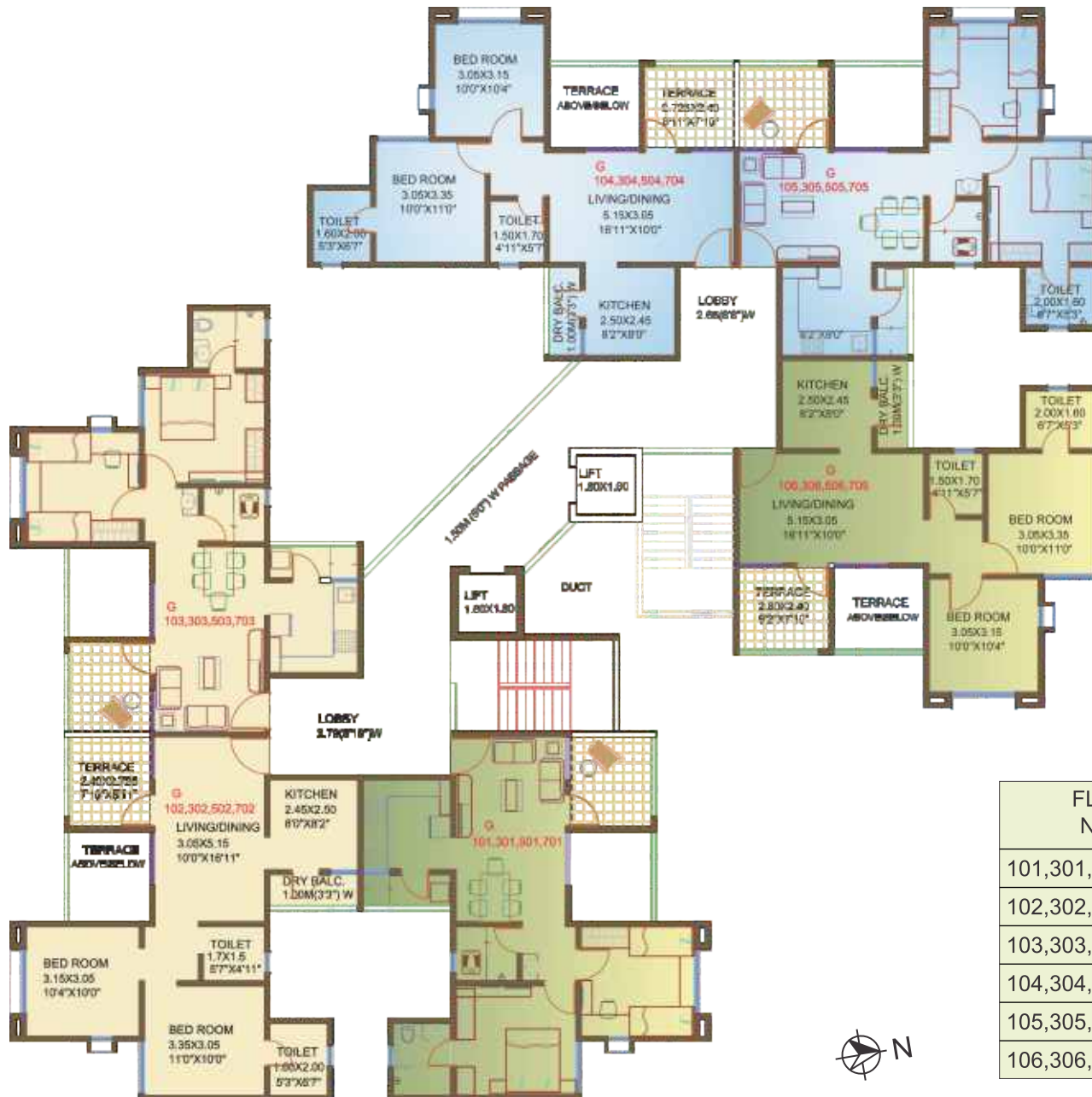


**WING G** (P2+P3+7)  
**TYPICAL FLOOR PLAN**  
 1st,3rd,5th & 7th



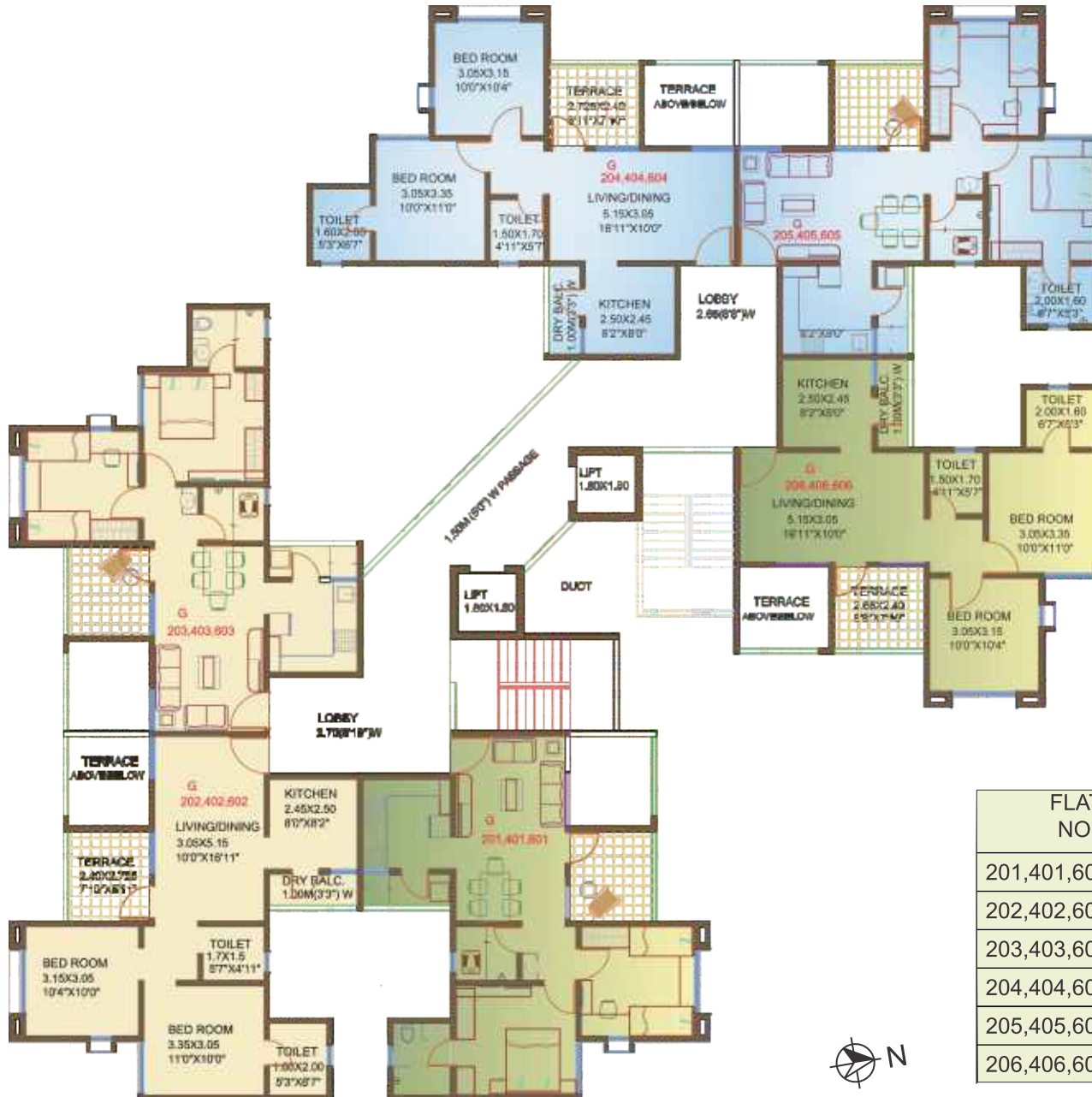
- HILL FACING FLATS
- GARDEN FACING FLATS
- LAKE FACING FLATS



FLAT NO	CARPET (SQFT)	FULL TERRACE
101,301,501,701	570	70
102,302,502,702	570	70
103,303,503,703	570	70
104,304,504,704	570	70
105,305,505,705	570	70
106,306,506,706	570	70

**WING G (P2+P3+7)**  
**TYPICAL FLOOR PLAN**

2nd,4th,6th



- HILL FACING FLATS
- GARDEN FACING FLATS
- LAKE FACING FLATS



FLAT NO	CARPET (SQFT)	FULL TERRACE
201,401,601	570	70
202,402,602	570	70
203,403,603	570	70
204,404,604	570	70
205,405,605	570	70
206,406,606	570	70